

REDÜKTÖR

REMAK REDÜKTÖR MAKİNA SANAYİİ

**HELİS DİŞLİLİ VE SONSUZ VİDALI REDÜKTÖRLER
F + RMS TİPİ REDÜKTÖRLER**

**HELIX GEAR AND ETERNAL SCREW GEARBOXES
F + RMS TYPE GEARBOXES**

F + RMS TİPİ REDÜKTÖR SEÇİM TABLOSU

P : Motor gücü

n2 : Çıkış hızı

M2 : Çıkış torku

i : Redüksiyon oranı

fs : Servis faktörü

F + RMS TYPES GEARBOXES
SELECTION TABLE

P : Motor power

n2 : Output speed

M2 : Output torque

i : Ratio of the gearbox

fs : Operating factor

P Kw	n2 1/min	i	M2 Nm	TİP TYPE		fs
0.25	0,5	1/1820	4775	F1 + RMS 90	80 M6A	1.5
	0,8	1/1138	2984	F1 + RMS 90	80 M6A	1.5
	1	1/910	2387	F1 + RMS 90	80 M6A	1.5
	1,5	1/920	1592	F1 + RMS 90	71 M4A	1.3
	2	1/690	1194	F1 + RMS 90	71 M4A	1.3
	2,5	1/552	955	F1 + RMS 90	71 M4A	1.3
	3	1/460	796	F1 + RMS 90	71 M4A	1.4
	4	1/345	597	F1 + RMS 90	71 M4A	1.4
	5	1/276	478	F1 + RMS 90	71 M4A	1.5
	6	1/230	398	F1 + RMS 90	71 M4A	1.5
0.37	0,5	1/1820	7067	F1 + RMS 90	80 M6B	1.1
	0,5	1/1820	7067	F2 + RMS 90	80 M6B	1.8
	0,8	1/1138	4417	F1 + RMS 90	80 M6B	1.1
	0,8	1/1138	4417	F2 + RMS 90	80 M6B	1.7
	1	1/910	3534	F1 + RMS 90	80 M6B	1.2
	1	1/910	3534	F2 + RMS 90	80 M6B	1.9
	1,5	1/927	2356	F1 + RMS 90	71 M4B	1.3
	1,5	1/927	2356	F2 + RMS 90	71 M4B	2.1
	2	1/695	1767	F1 + RMS 90	71 M4B	1.4
	2,5	1/556	1413	F1 + RMS 90	71 M4B	1.4
0.55	0,5	1/1820	10505	F2 + RMS 90	80 M6C	1.3
	0,5	1/1820	10505	F2 + RMS 110	80 M6C	2.1
	0,8	1/1138	6566	F2 + RMS 90	80 M6C	1.3
	0,8	1/1138	6566	F2 + RMS 110	80 M6C	2.4
	1	1/910	5253	F2 + RMS 90	80 M6C	1.4
	1	1/910	5253	F2 + RMS 110	80 M6C	2.1
	1,5	1/930	3502	F2 + RMS 90	80 M4A	1
	1,5	1/930	3502	F2 + RMS 110	80 M4A	1.6
	2	1/698	2626	F2 + RMS 90	80 M4A	1.2
	2,5	1/558	2101	F2 + RMS 90	80 M4A	1.3
	3	1/465	1751	F2 + RMS 90	80 M4A	1.4
	4	1/349	1313	F2 + RMS 90	80 M4A	1.4
	5	1/279	1051	F2 + RMS 90	80 M4A	1.6
	6	1/233	875	F2 + RMS 90	80 M4A	1.5
	7	1/199	750	F2 + RMS 90	80 M4A	1.4



F + RMS TİPİ REDÜKTÖR SEÇİM TABLOSU

P : Motor gücü

n2 : Çıkış hızı

M2 : Çıkış torku

i : Redüksiyon oranı

fs : Servis faktörü

F + RMS TYPES GEARBOXES SELECTION TABLE

P : Motor power

n2 : Output speed

M2 : Output torque

i : Ratio of the gearbox

fs : Operating factor

P Kw	n2 1/min	i	M2 Nm	TİP TYPE		fs
0,55	8	1/174	657	F2 + RMS 90	80 M4A	1.4
	9	1/155	584	F2 + RMS 90	80 M4A	1.5
0,75	0,5	1/1850	14325	F3 + RMS 110	90 S6A	2.4
	0,5	1/1850	14325	F2 + RMS 110	90 S6A	1.3
	0,5	1/1850	14325	F2 + RMS 90	90 S6A	0.8
	0,8	1/1156	8953	F3 + RMS 110	90 S6A	2.5
	0,8	1/1156	8953	F2 + RMS 110	90 S6A	1.4
	0,8	1/1156	8953	F2 + RMS 90	90 S6A	0.9
	1	1/925	7163	F3 + RMS 110	90 S6A	2.5
	1	1/925	7163	F2 + RMS 110	90 S6A	1.4
	1	1/925	7163	F2 + RMS 90	90 S6A	0.9
	1,5	1/933	4775	F2 + RMS 110	80 M4B	1.6
	1,5	1/933	4775	F2 + RMS 90	80 M4B	1.2
	2	1/700	3581	F2 + RMS 90	80 M4B	1.3
	2,5	1/560	2865	F2 + RMS 90	80 M4B	1.4
	3	1/467	2388	F2 + RMS 90	80 M4B	1.3
	4	1/350	1790	F2 + RMS 90	80 M4B	1.3
	5	1/280	1433	F2 + RMS 90	80 M4B	1.4
	6	1/233	1194	F2 + RMS 90	80 M4B	1.4
	7	1/200	1023	F2 + RMS 90	80 M4B	1.5
8	1/175	895	F2 + RMS 90	80 M4B	1.5	
9	1/156	796	F2 + RMS 90	80 M4B	1.6	
1,1	0,5	1/1870	21010	F3 + RMS 110	90 L6B	1.6
	0,5	1/1870	21010	F2 + RMS 110	90 L6B	1.1
	0,8	1/1169	13131	F3 + RMS 110	90 L6B	1.8
	0,8	1/1169	13131	F2 + RMS 110	90 L6B	1.2
	1	1/935	10505	F3 + RMS 110	90 L6B	1.9
	1	1/935	10505	F2 + RMS 110	90 L6B	1.2
	1,5	1/940	7003	F3 + RMS 110	90 S4A	1.8
	1,5	1/940	7003	F2 + RMS 110	90 S4A	1
	2	1/705	5253	F3 + RMS 110	90 S4A	1.4
	2,5	1/564	4202	F3 + RMS 110	90 S4A	1.4
	3	1/470	3501	F3 + RMS 110	90 S4A	1.5
	4	1/353	2626	F3 + RMS 110	90 S4A	1
	5	1/282	2101	F2 + RMS 90	90 S4A	1
	6	1/235	1751	F2 + RMS 90	90 S4A	1
7	1/201	1501	F2 + RMS 90	90 S4A	1.1	
8	1/176	1313	F2 + RMS 90	90 S4A	1.1	
9	1/157	1167	F2 + RMS 90	90 S4A	1.1	
1,5	0,5	1/1880	28650	F3 + RMS 130	100 L6A	2.2
	0,5	1/1880	28650	F3 + RMS 110	100 L6A	1.3
	0,8	1/1175	17906	F3 + RMS 130	100 L6A	2.4
	0,8	1/1175	17906	F3 + RMS 110	100 L6A	1.3
	1	1/940	14325	F3 + RMS 130	100 L6A	2.3



F + RMS TİPİ REDÜKTÖR SEÇİM TABLOSU

P : Motor gücü

n2 : Çıkış hızı

M2 : Çıkış torku

i : Redüksiyon oranı

fs : Servis faktörü

F + RMS TYPES GEARBOXES

SELECTION TABLE

P : Motor power

n2 : Output speed

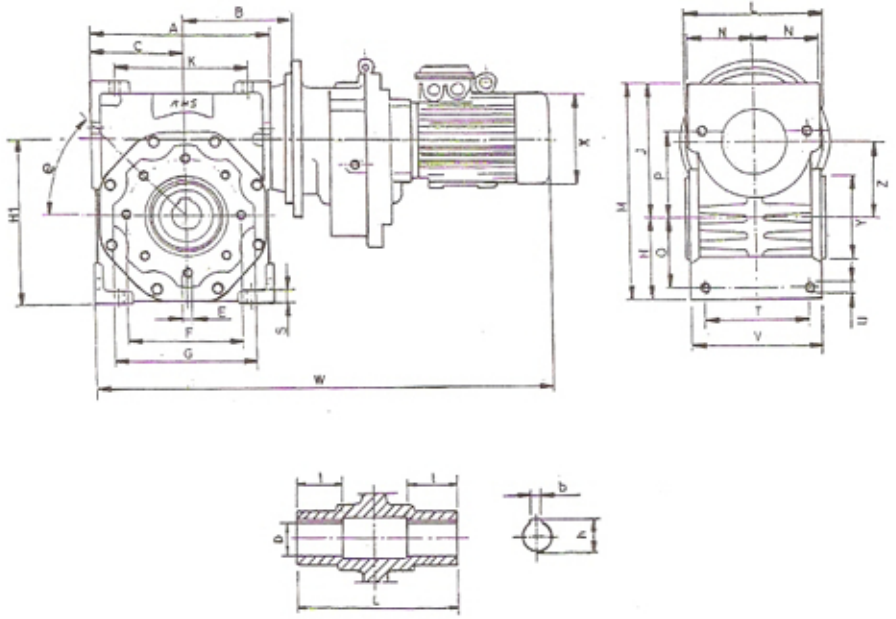
M2 : Output torque

i : Ratio of the gearbox

fs : Operating factor

P Kw	n2 1/min	i	M2 Nm	TİP TYPE		fs
1.5	1	1/940	14325	F3 + RMS 110	100 L6A	1.4
	1.5	1/947	9550	F3 + RMS 130	90 L4A	1.6
	1.5	1/947	9550	F3 + RMS 110	90 L4A	1.1
	2	1/710	7162.5	F3 + RMS 110	90 L4A	1.2
	2.5	1/568	5730	F3 + RMS 110	90 L4A	1.3
	3	1/473.3	4775	F3 + RMS 110	90 L4A	1.3
	4	1/355	3581	F3 + RMS 110	90 L4A	1.4
	5	1/284	2865	F3 + RMS 110	90 L4A	1.4
	6	1/236.6	2387.5	F3 + RMS 110	90 L4A	1.5
2.2	7	1/202.8	2046.4	F3 + RMS 110	90 L4A	1.6
	8	1/177.5	1790.6	F3 + RMS 110	90 L4A	1.7
	9	1/157.7	1591.6	F3 + RMS 110	90 L4A	1.7
	0.5	1/1890	42020	F4 + RMS 160	112 M6A	2.4
	0.5	1/1890	42020	F4 + RMS 130	112 M6A	1.4
	0.8	1/1181.2	26262.5	F4 + RMS 160	112 M6A	2.5
	0.8	1/1181.2	26262.5	F4 + RMS 130	112 M6A	1.4
	1	1/945	21010	F4 + RMS 160	112 M6A	2.5
	1	1/945	21010	F4 + RMS 130	112 M6A	1.5
	1.5	1/630	14006	F4 + RMS 160	100 L4A	1.8
	1.5	1/946.6	14006	F4 + RMS 130	100 L4A	1.3
	2	1/710	10505	F4 + RMS 130	100 L4A	1.3
	2.5	1/568	8404	F4 + RMS 130	100 L4A	1.4
	3	1/473.3	7003.3	F4 + RMS 130	100 L4A	1.4
	4	1/355	5252.5	F4 + RMS 130	100 L4A	1.5
	5	1/284	4202	F4 + RMS 110	100 L4A	1.2
	3	6	1/236.6	3501.6	F4 + RMS 110	100 L4A
7		1/202.8	3001.4	F4 + RMS 110	100 L4A	1.4
8		1/177.5	2626.2	F4 + RMS 110	100 L4A	1.4
9		1/157.7	2334.4	F4 + RMS 110	100 L4A	1.5
0.5		1/1900	57300	F4 + RMS 160	132 S6B	2.5
0.5		1/1900	57300	F4 + RMS 130	132 S6B	1.4
0.8		1/1187.5	35812.5	F4 + RMS 160	132 S6B	2.6
0.8		1/1187.5	35812.5	F4 + RMS 130	132 S6B	1.5
1		1/950	28650	F4 + RMS 160	132 S6B	2.5
1		1/950	28650	F4 + RMS 130	132 S6B	1.4
1.5		1/633.3	19100	F4 + RMS 160	100 L4B	2.5
1.5		1/953.3	19100	F4 + RMS 130	100 L4B	1.4
2		1/715	14325	F4 + RMS 130	100 L4B	1.4
2.5		1/572	11460	F4 + RMS 130	100 L4B	1.5
3		1/476.6	9550	F4 + RMS 130	100 L4B	1.5
4		1/357.5	7162.5	F4 + RMS 130	100 L4B	1.6
5		1/286	5730	F4 + RMS 130	100 L4B	1.6
6	1/238.3	4775	F4 + RMS 130	100 L4B	1.7	
7	1/204.2	4092.8	F4 + RMS 130	100 L4B	1.7	
8	1/178.7	3581.2	F4 + RMS 130	100 L4B	1.8	
9	1/158.8	3183.3	F4 + RMS 130	100 L4B	1.8	



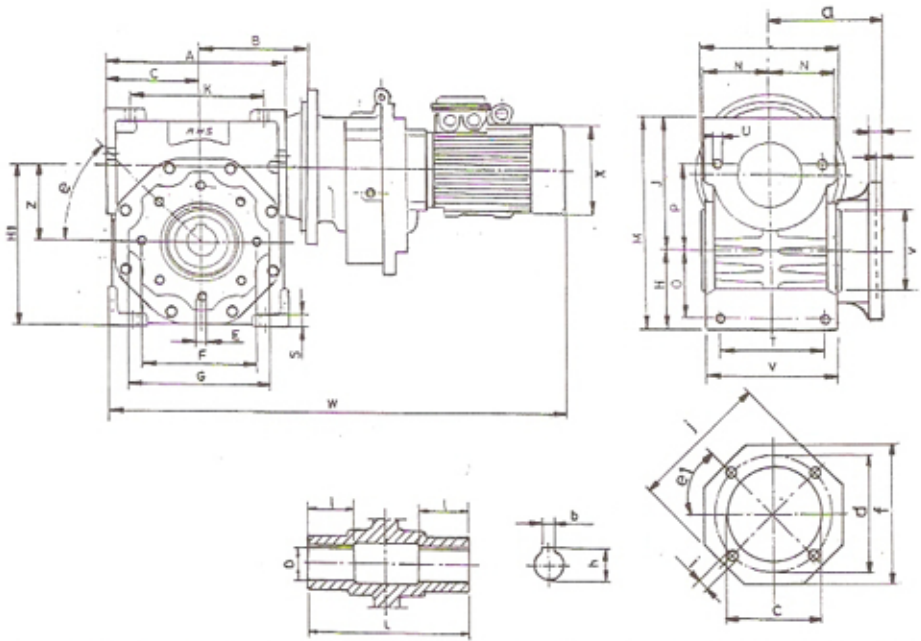


TIP TYPE	A	B	C	D (H7)	E	F	G	H	H1	I	J	K	L	M	N	O	P	S	T	U	V	Y (H8)	Z	b	h	e
F1+RMS90	206	130	103	35 (38)	M10x18	130	163	103	193	45	135	140	140	238	67	70	102	12	100	13	130	110	90	10 (10)	38.3 (41.3)	45
F2+RMS90	206	130	103	35 (38)	M10x18	130	163	103	193	45	135	140	140	238	67	70	102	12	100	13	130	110	90	10 (10)	38.3 (41.3)	45
F2+RMS110	256	157	128	42 (45)	M10x18	165	200	132	237.5	50	164	170	170	296	73	85	126	15	115	14	146	130	110	12	45.3 (48.3)	45
F3+RMS110	256	157	128	42 (45)	M10x18	165	200	132	237.5	50	164	170	170	296	73	85	126	15	115	14	146	130	110	12	45.3 (48.3)	45
F3+RMS130	296	180	148	45	M12x21	215	252	148	278	60	188	200	170	336	80	100	141	16	120	16	157	180	130	14	48.8	45
F4+RMS130	296	180	148	45	M12x21	215	252	148	278	60	188	200	170	336	80	100	141	16	120	16	157	180	130	14	48.8	45
F4+RMS160	345	210	170	50	M12x21	265	300	170	330	75	210	240	200	380	90	115	170	17	130	18	168	235	160	14	53.6	45

NOT: X - W Ölçüsü kullanılacak motor tipine göre değişir. Varies according to the motor type is x - w dimensions

RMS+F TİPİ GENEL ÖLÇÜLER

GENERAL DIMENSIONS



TİP / TYPE	A	B	C	D(H7)	E	F	G	H	H1	I	J	K	L	M	N	O	P	S
F1+RMS90	206	130	103	35(38)	M10x18	130	163	103	193	45	135	140	140	238	67	70	102	12
F2+RMS90	206	130	103	35(38)	M10x18	130	163	103	193	45	135	140	140	238	67	70	102	12
F2+RMS110	256	157	128	42(45)	M10x18	165	200	127.5	237.5	50	164	170	170	296	73	85	126	15
F3+RMS110	256	157	128	42(45)	M10x18	165	200	127.5	237.5	50	164	170	170	296	73	85	126	15
F3+RMS130	296	180	148	45	M12x21	215	252	148	278	60	188	200	170	336	80	100	141	16
F4+RMS130	296	180	148	45	M12x21	215	252	148	278	60	188	200	170	336	80	100	141	16
F4+RMS160	345	210	170	50	M12x21	265	300	170	330	75	210	240	200	380	90	115	170	17

TİP / TYPE	T	U	V	Y(H8)	Z	b	h	e	a	c(H8)	d	f	g	i	i	j	e1
F1+RMS90	100	13	130	110	90	10(10)	38.3(41.3)	45	110	152	182	200	7	13	14	210	45
F2+RMS90	100	13	130	110	90	10(10)	38.3(41.3)	45	110	152	182	200	7	13	14	210	45
F2+RMS110	115	14	146	130	110	12	45.3(48.3)	45	130	170	230	260	7	13	14	280	45
F3+RMS110	115	14	146	130	110	12	45.3(48.3)	45	130	170	230	260	7	13	14	280	45
F3+RMS130	120	16	157	180	130	14	48.8	45	142	215	290	290	7	15	16	320	45
F4+RMS130	120	16	157	180	130	14	48.8	45	142	215	290	290	7	15	16	320	45
F4+RMS160	130	18	168	235	160	14	53.6	45	150	200	285	330	8	18	16	365	45

NOT: X - W Ölçüsü kullanılacak motor tipine göre değişir. Varies according to the motor type is x - w dimensions